



# OFFICIAL **TEAM INVITATION**

*Championship & Cup 2017  
for Senior Men 55+*

POLAND 2017 | TOURNAMENT BOOKLET





# *Index for Poland 2017*



## **Index 2017**

### **1. Invitation by the Polish President**

### **2. Programme for the tournament**

### **3. Committees & Contact Persons**

- A. ESGA Committee
- B. Championship Committee
- C. Tournament Committee

### **4. Important Informations**

Registration, Reception, Parking & Costs, Transportation, Official Notice Boards, Restaurants, Caddy Room, Driving Range and Buggies & Trolleys

### **5. Hotel, Transportation & Car Rentals**

- 5.1 Sierra Appartements
- 5.2 Mercure Hotel Gdynia
- 5.3 Travel Information

### **6. Golf Courses**

- 6.1 Sierra Golf Club
- 6.2 Postołowo Golf Club
- 6.3 Tokary Golf & Country Club

### **7. Fees**

- A. Player
- B. President and Ladies (playing in the Presidents' Tournament)
- C. President (non-playing) / Accompanying Ladies
- D. Ladies (playing in the Golf Tournament)
- E. Non-playing persons / captains



## *Dear Golf Friends*

As one of the youngest members of the Union of European Senior Golfers Association, the Polish Senior Golf Association, is proud and happy to host, for the first time on our soil, the 36th ESGA Championship and Cup.

For our young Association and its members, it will also be a great inspiration for further development, increasing the number of our members and making new steps in integration with European Senior Golf Community.

**The Championship will be held** on one of the most challenging golf courses in Poland, **Postolowo Golf Club**, which already hosted few international tournaments. For some time it was the longest course in Europe (over 7000 m).

**The Cup will be held at Sierra Golf Club.** It is probably the prettiest golf course in Poland, always in the best golf condition. SGC has the biggest experience in organizing international tournaments. SGC hosted such tournaments as: European Senior Men Team Championships and European Senior Ladies Team Championships.

Taking the opportunity of hosting European golf (and not only) Elite, we would like to present one of the most dynamic developing region of Poland. The region where the changes on the European political scene have started, the place where Solidarity was born. I am sure there will be time to visit all **historical places of Triple City** (Gdansk, Sopot and Gdynia).

The **Headquarters of the tournament as well as all ceremonies will be held at Mercure Hotel in Gdynia** with a view on the Baltic sea and harbor. For Cup players I recommend Sierra apartments, located at Sierra Golf Club.

We will provide the transportation from and to the Gdansk airport as well as shuttle busses to and from golf courses.

On behalf of the Board of Polish Senior Golf Association and all our members, I would like to welcome you all and wish enjoyable stay in Poland. I hope you will take pleasant memories back home and would visit us again in the future.

*Bogusław Bil*

*President of the Polish Senior Golf Association*



# *The Official Programme for Poland 2017*



## **Day 1 | Monday – 19th June 2017**

10.00 – 22.00 Arrival of participants and check-in at hotel and golfreception.  
ESGA Committee meeting at the Mercure Hotel.

## **Day 2 | Tuesday 20th June 2017**

Arrival of remaining participants and check-in.  
09.00 – 19.00 Official Training day.  
ESGA Committee meeting at the Mercure Hotel.  
19.00 – 20.00 Captains meeting at the Mercure Hotel.  
20.00 – 22.00 Opening Ceremony with Cocktail Party and Photo session  
at the Mercure Hotel.

## **Day 3 | Wednesday – 21st June 2017**

07.30 – 19.00 Tournament day 1, Championship & Cup.  
14.00 – 19.00 President and Ladies tournament Tokary Golf & CC.  
followed by Dinner and Prize Giving Ceremony.  
Free evening for players.

## **Day 4 | Thursday – 22nd June 2017**

07.30 – 19.00 Tournament day 2, Championship & Cup.  
18.00 – 19.30 ESGA General Assembly meeting  
followed by Dinner for Presidents and their Spouses.  
Free evening for players.

## **Day 5 | Friday – 23rd June 2017**

07.30 – 19.00 Tournament day 3, Championship & Cup.  
Optional trip to Gdansk with additional attractions  
20.00 Gala dinner with Closing Ceremony and Prize Giving Ceremony  
at the Mercure Hotel.

## **Day 6 | Saturday – 24th June 2017**

07.30 – 19.00 Departure day.



# *Committees & Contact Persons*



## 3 | COMMITTEES & CONTACT PERSONS

### A. ESGA COMMITTEE

- |                 |                             |
|-----------------|-----------------------------|
| GEORGES GEVERS  | - PRESIDENT OF ESGA         |
| GEORGES KIEFFER | - SECRETARY GENERAL OF ESGA |

### B. CHAMPIONSHIP COMMITTEE

- |                   |                                    |
|-------------------|------------------------------------|
| BOGUSŁAW BILL     | - PRESIDENT OF SGA                 |
| GEORGES GEVERS    | - PRESIDENT OF ESGA                |
| MAREK MICHAŁOWSKI | - PRESIDENT OF PGU                 |
| MIECZYŚLAW STRUK  | - MARSHAL OF POMORSKIE REGION      |
| PIOTR POSPIESZNY  | - OWNER OF TOKARY GOLF&CC          |
| TADEUSZ SIEK      | - OWNER OF SIERRA GOLF CLUB        |
| WILLIAM SIWEK     | - OWNER OF POSTOŁOWO GOLF&CC       |
| WOJCIECH SZCZUREK | - PRESIDENT OF GDYNIA CITY         |
| DAIVA MACIULE     | - GENERAL MANAGER OF MERCURE HOTEL |

### C. TOURNAMENT COMMITTEE

- |                    |                                     |
|--------------------|-------------------------------------|
| SEBASTIAN MAGRIAN  | - CHIEF EXECUTIVE OFFICER SIERRA GC |
| PAWEŁ KULCZYKOWSKI | - GENERAL MANAGER TOKARY G&CC       |
| AGNIESZKA SULEWSKA | - MANAGER POSTOŁOWO G&CC            |
| KRZYSZTOF GÓRA     | - MAIN REFEREE                      |
| JANUSZ MOJSIEWICZ  | - CUP TOURNAMENT DIRECTOR           |
| JACEK GAZECKI      | - CHAMPIONSHIP TOURNAMENT DIRECTOR  |
| KAMIŁA PIEPER      | - APARTMENT MANAGER SIERRA GC       |
| MARIA TROSZYŃSKA   | - PROJECT PARTNER SIERRA GC         |

# *Important Informations*



## **4 | Important Informations**

### **A | Registration**

To register for the Tournament please fill the registration forms and booking form on the [www.esgagolf.com](http://www.esgagolf.com) website.

### **B | Reception**

Golfdesk at the hotel-reception will be in operation Monday the 19th of June from 08:00 to 22:00 and Tuesday, Wednesday, Thursday, Friday and Saturday from 07:00 to 20:00.

### **C | Parking & Costs**

Parking is available at the hotel-parking-place and at official parking-place without charge.

### **D | Transportation**

Shuttle Buses available from Hotel to and from the Golf Courses free of charge.

### **E | Official Notice Boards**

All information will be available at the notice board located at the hotel and golf courses tournament desks.

### **F | Restaurants**

Several restaurants will be in operation at the Hotel & Golf courses.

### **G | Caddy Room**

Available for Golf Bags at the Golf Courses, free of charge.

### **H | Driving Range**

Practice balls available at driving ranges free of charge.

### **I | Buggies and Trolleys**

Golf courses are in possession of sufficient amount of pull Trolleys available. In the Championship & Cup, buggies are not permitted, unless explicitly approved by the ESGA Committee. Golf Carts will be available for all players of Presidents and Ladies Tournament.



## *Official Accommodation Sierra Apartments*



### 5.1 | Sierra Apartments

Located on the golf course Sierra Golf Club. Because of the proximity and to improve communication, this location is strongly suggested to the participants of the Cup, which will be played on the Sierra Golf Club. In the process of booking decides the order of applications.

The modern 26 Apartments and 8 Villas will provide you with a flat-screen TV, fully equipped kitchenette with a microwave and a dining area in each. Featuring a shower, private bathrooms also came with free toiletries.

### CONTACT

Pętkowice, 84-200 Wejherowo

Apartment Manager  
Kamila Pieper

Tel: + 48 605 050 831

Mail: [kamila.pieper@sierragolf.pl](mailto:kamila.pieper@sierragolf.pl)

Web: [www.sierragolf.pl/apartamenty-sgc](http://www.sierragolf.pl/apartamenty-sgc)

Type of APT	Number of days	Break fast	Accommodation	1-day package	5 days package
Single APT	5	10 €	55 €	65 €	325 €
Double APT	5	20 €	85 €	105 €	525 €
APT for 3 persons	5	30 €	116 €	146 €	730 €
APT for 4 persons	5	40 €	145 €	185 €	925 €



Please fill the registration forms and booking form on the [www.esgagolf.com](http://www.esgagolf.com) web-site follow the instructions.

## *Official Accommodation Mercure Hotel Gdynia*



### 5.2 | Mercure Hotel Gdynia

Every stay at a Mercure hotel offers a new experience, with each hotel offer-ing its own style and personality. Enjoy locally rooted design and decor which creates authentic and inspiring settings. Appreciate classic style with a modern twist or contemporary design. Give in to incomparable atmospheres and wonderful promises of escape. Dive into an atmosphere that can't be found anywhere else.

Please fill the registration forms and booking form on the [www.esgagolf.com](http://www.esgagolf.com) web-site follow the instructions.

### CONTACT

Armii Krajowej 22  
81-372 Gdynia  
Polen

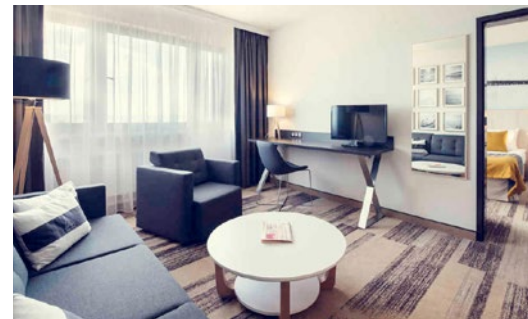
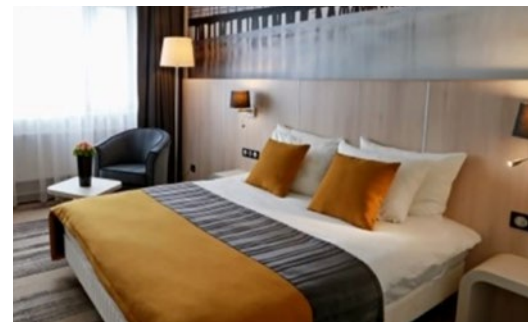
Tel.: +48 58 666 30 40  
Fax: +48 58 620 86 51

Mail: H3417@accor.com  
Web: [www.accor.com](http://www.accor.com)

### 19.-24.06.2017

### 1 day package

Single Standard	84 €
Double Standard	113 €
Room 2-bed Family (living room and bedroom)	126 €
Double Superior	93 €
Double Superior	122 €
Single Privilege	97 €
Double Privilege	127 €
Single Apartment	112 €
Double Apartment	140 €





# *Travel Information*

## 5.4 | Information

- 2 km from Wejherowo
- 17 km from Tricity Ring Road
- 22 km to the Centre of Gdynia
- 35 km to the Lech Walesa Airport Gdańsk
- 390 km to the Warsaw Chopin Airport
- 450 km to the Flughafen Schönefeld, Flughafen Tegel, in Berlin
- 17km to a Ferry Gdynia



# *Our three Golf Courses for the Championship & Cup in Poland 2017*

## 6 | Golf Courses

### Sierra Golf Course

Pętkowice, 84-200 Wejherowo

Tel.: +48 663 666 620

Mail: [sierragolf@sierragolf.pl](mailto:sierragolf@sierragolf.pl)

Web: [www.sierragolf.pl](http://www.sierragolf.pl)



Sierra Golf Course

### Postołowo Golf Club Gdańsk Golf & Country Club

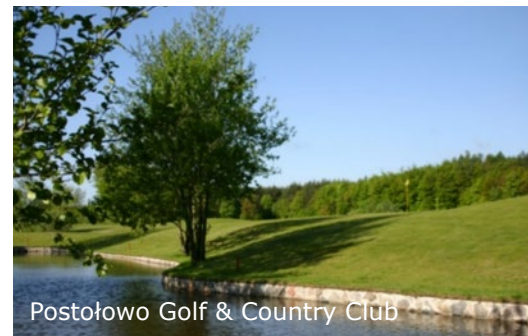
83-042 Postołowo / POLAND

Tel.: +48 58 683 71 00

GSM: +48 60 024 7248

Mail: [office@postolowo.com](mailto:office@postolowo.com)

Web: [www.postolowo.com](http://www.postolowo.com)



Postołowo Golf & Country Club

### Tokary Golf & Country Club

Przodkowska 63, 83-304 Tokary

Tel.: +48 58 694 01 82

Mail: [biuro@tokarygolf.pl](mailto:biuro@tokarygolf.pl)

Web: [www.tokarygolf.pl](http://www.tokarygolf.pl)



Tokary Golf & Country Club

## *The characteristics of Sierra Golf Course*

### 6.1 | Sierra Golf Course

**HOLES:** 18  
**PAR:** 72  
**DISTANCE:** 5623 m (yellow tee)  
**Built:** 2002

Pętkowice near Wejherowo, near the Gulf of Gdansk is the location of a club that is comparable even with the best structures of this type worldwide. Sierra Golf Club is a modern and professional sports facility, with master class golf field featuring 18 holes (par 72) and the Golf Academy which consists of training 9 holes and a driving range (26 spots guarded against rain), putting, chipping, and pitching green.

It is very well linked in terms of transport (airport in Gdańsk, A1 motorway, ferry slip in Gdynia). The parkland impresses everyone with its beauty and blaze of colours in every season. Golfers appreciate a difficult nature of fast greens, diversified terrain with a number of ponds and streams.

Thanks to the amount of work and efforts of the best greenkeepers Sierra Golf Club is a world-class golf course. That is where the most important sport events of golf, the most beautiful sport discipline, take place:

- Qualifications to Omega Golf Tournament
- European Senior Men's Team Championship by BMW 2014
- European Senior Women's Team Championship 2016
- Professional League pro Golf Tour LOTOS Polish Open 2015 (live broadcast by TVP Sport)



### SIERRA GOLF CLUB

Pętkowice  
 84-200 Wejherowo  
 Tel.: +48 663 666 620  
 Mail: [sierragolf@sierragolf.pl](mailto:sierragolf@sierragolf.pl)  
 Web: [www.sierragolf.pl](http://www.sierragolf.pl)





# *The characteristics of Postołowo Golf & Country Club*

## 6.2 | Postołowo Golf Club Gdańsk Golf & Country Club

**HOLES: 18**

**PAR: 72**

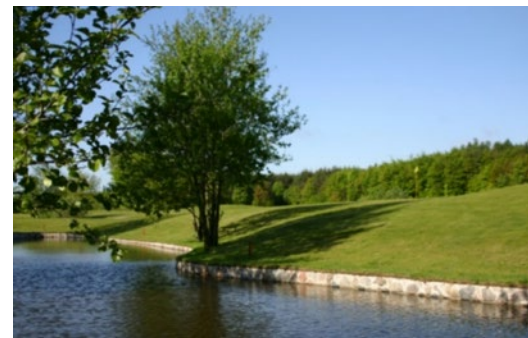
**DISTANCE: 6332 M (yellow tee)**

will be reduced to 6000m for championship

In 2006 the course was lengthened to 7766 yards/ 7101 meters when 9 new back tees were constructed.

Described by the German GOLF JOURNAL in 2004 already as a „monster“, after extending the back tees it has now become from the tips one of the most challenging golf courses in the world. Several of the new back tees in Postołowo were constructed on the recommendations of Mr. Mikael Ericsson, the director of the PGA European Tour who visited the course in 2004.

The quiet village of Postołowo is situated 26 kilometres from busy Gdansk. Gdansk, in turn, together with Sopot and Gdynia (known in Poland as the Tri-City forms a municipal conurbation with a population of almost 1 million.



### Postołowo Golf Club Gdańsk Golf & Country Club

83-042 Postołowo / POLAND

Tel.: +48 58 683 71 00

GSM: +48 60 024 7248

Mail: [office@postolowo.com](mailto:office@postolowo.com)

Web: [www.postolowo.com](http://www.postolowo.com)



# *The characteristics of Tokary Golf & Country Club*



## 6.3 | Tokary Golf & Country Club

**HOLES: 18**  
**PAR: 72**  
**DISTANCE: 5067 M (yellow tee)**

GOLF COURSE situated on hilly area surrounded by forests typical of the land-scape of the Kashubian Switzerland, just 9 km from the airport Gdańsk – Rebiechowo.

Mountainous and open nature of the course enhance the differences in height, which reach up to 40m. Almost every hole you can see the other fairways and some greens. The property is ideal for those who like challenges, Tokary G&CC requires the player versatile skills wells are highly varied, how-ever, designed to reward precision.

## Tokary Golf & Country Club

Przodkowska 63, 83-304 Tokary

Tel.: +48 58 694 01 82

Mail: [biuro@tokarygolf.pl](mailto:biuro@tokarygolf.pl)

Web: [www.tokarygolf.pl](http://www.tokarygolf.pl)





## *Fees for Poland 2017*



### 7 | Fees

#### The following fees apply in €

##### **A. Players | 340 €**

Includes:

- A) Transportation - from the airport to the hotels and shuttles to the golf courses
- B) Opening ceremony
- C) Closing ceremony
- D) Green Fee - (4 days)
- E) Driving Range with practice balls

##### **B. Presidents and Presidents ladies playing the president/ladies tournament | 230 €**

This includes, green fee for the tournament, opening and closing ceremony, meeting and President dinner, lunch and prizes.

##### **C. Presidents (non playing) and ladies accompanying Presidents: 190 €**

This includes opening and closing ceremonies and President dinner.

##### **D. Ladies playing the golf tournament | 180 €**

This includes the green fee for the tournament and the opening and closing ceremonies.

##### **E. Non playing persons \ captains | 140 €**

This includes opening and closing ceremonies.

**REGISTRATION FEES SHOULD BE PAID LATEST 01st of MAY 2017**

For detailed rules, see the ESGA website [www.esgagolf.com](http://www.esgagolf.com)

